



Brand Design

Holiday Inn Express - Formula Blue Public Area Scheme

InterContinental Hotels Group
Design & Construction
Three Ravinia Drive, Suite 100
Atlanta, GA 30346  InterContinental Hotels Group

COLORWAY:

AREA: Meeting Room

MANUFACTURER:

WARP & PHIL BY FABRI-QUILT
P 816-421-2000

E quotes@warpanphil.com
901 East 14th Avenue
North Kansas City, MO 64116

REP FIRM:

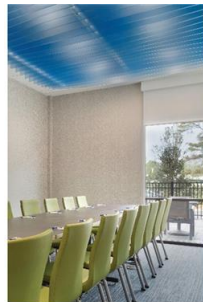
SPEC NO: EXP-601.3

DESCRIPTION: Full Fabricated Dual Window Shade System at Meeting Room

DIMENSIONS: Dual Rollershade Clutch Side Channels (2)and Blackout Hem Bar
Typical New Development sizes: Two shades side x side (25.25" W X 120" L) & (91" W X 120" L) FIELD VERIFY PRIOR TO PRODUCTION

FINISH/COLOR: Blackout channels: White; See EXP-601.3A (Blackout) & EXP-601.3B (Sheer) for Fabric Specs

Fabrication to be in accordance with IHG standards as stated in the FF&E Construction and Specification Guidelines and as follows:



Images Not to Scale or Color
For Design Intent Only

NOTES:

1. Clear anodized aluminum metal fascia to be provided by manufacturer.
2. Chain to be #10 Stainless steel with stops.
3. Manufacturer to add 6" of extra length to shades on top of roll.
4. ANSI Standards approved cord tension device to be used, install on side of window frame. Install so that the chain operates smoothly.
5. Sheer fabric to go on room side, blackout fabric to go against the window.
6. All drapery and blackout fabrics must meet flammability code NFPA 701 Small Scale. Certification of compliance must accompany invoice.

ISSUE DATE:	REVISION DATE:	REV. NO:	SPEC NO:
4/1/2015	10/1/2016	1	EXP-601.3

Contact supplier for contracted pricing. All orders must be marked as specified by IHG. All installed fabrics, upholstery, carpet, wallcovering, and other finish materials must meet local fire codes and regulations. Manufacturer must provide flame certificate to owner/purchaser at time order is shipped. Fabricator and/or installer must confirm the exact quantities required. All substitutions must be approved by IHG prior to ordering. Manufacturers must provide maintenance instructions. All shop drawings, finish samples, artwork and/or strike-offs must be submitted to IHG, for approval prior to production.



Brand Design

Holiday Inn Express - Formula Blue Public Area Scheme

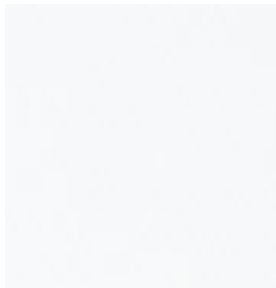
InterContinental Hotels Group
Design & Construction
Three Ravinia Drive, Suite 100
Atlanta, GA 30346  InterContinental Hotels Group

COLORWAY:

AREA: Meeting Room

- 7. All hardware to be commercial grade.
- 8. Drapery fabrication and hardware to be of contract quality and suitable for commercial use.
- 9. Designer to determine quantity based upon individual property requirements
- 10. No seams allowed either vertically or horizontally, full fabric panels required.
- 11. Install side Blackout channels on Jamb.

FINISHES:



MANUFACTURER:
Warp & Phil by Fabri-Quilt
901 East 14th Avenue
North Kansas City, MO 64116
816-421-2000
quotes@warpandphil.com

REPRESENTATIVE:

Category: EXP-601.3A
Description: Window Shade Blackout Fabric
Color: White
Pattern: Roll Right
Content: 47% Polyester, 53% Acrylic Foam Backing (PVC-free)
Width: 118" W



MANUFACTURER:
Warp & Phil by Fabri-Quilt
901 East 14th Avenue
North Kansas City, MO 64116
816-421-2000
quotes@warpandphil.com

REPRESENTATIVE:

Category: EXP-601.3B
Description: Window Shade Sheer Fabric
Color: White
Pattern: Fine Lines
Content: 100% Polyester (PVC-free)
Width: 94" W

ISSUE DATE:	REVISION DATE:	REV. NO:	SPEC NO:
4/1/2015	10/1/2016	1	EXP-601.3

Contact supplier for contracted pricing. All orders must be marked as specified by IHG. All installed fabrics, upholstery, carpet, wallcovering, and other finish materials must meet local fire codes and regulations. Manufacturer must provide flame certificate to owner/purchaser at time order is shipped. Fabricator and/or installer must confirm the exact quantities required. All substitutions must be approved by IHG prior to ordering. Manufacturers must provide maintenance instructions. All shop drawings, finish samples, artwork and/or strike-offs must be submitted to IHG, for approval prior to production.



Brand Design

Holiday Inn Express - Formula Blue Public
Area Scheme

InterContinental Hotels Group
Design & Construction
Three Ravinia Drive, Suite 100
Atlanta, GA 30346  InterContinental Hotels Group

COLORWAY:

AREA: Meeting Room

ISSUE DATE:	REVISION DATE:	REV. NO:	SPEC NO:
4/1/2015	10/1/2016	1	EXP-601.3

Contact supplier for contracted pricing. All orders must be marked as specified by IHG. All installed fabrics, upholstery, carpet, wallcovering, and other finish materials must meet local fire codes and regulations. Manufacturer must provide flame certificate to owner/purchaser at time order is shipped. Fabricator and/or installer must confirm the exact quantities required. All substitutions must be approved by IHG prior to ordering. Manufacturers must provide maintenance instructions. All shop drawings, finish samples, artwork and/or strike-offs must be submitted to IHG, for approval prior to production.



Brand Design

Holiday Inn Express - Formula Blue Public Area Scheme

InterContinental Hotels Group
Design & Construction
Three Ravinia Drive, Suite 100
Atlanta, GA 30346  InterContinental Hotels Group

COLORWAY:

AREA: Public Areas

MANUFACTURER:

WARP & PHIL BY FABRI-QUILT
P 816-421-2000

E quotes@warpanphil.com
901 East 14th Avenue
North Kansas City, MO 64116

REP FIRM:

SPEC NO: EXP-602.3

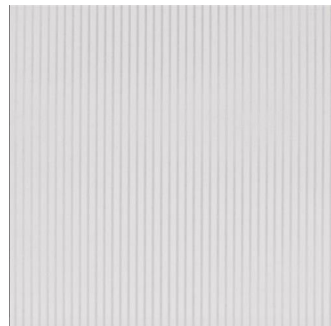
DESCRIPTION: Full Fabricated Sheer Window Shade System at Public Areas

MODEL NO: Single Roller Shade

DIMENSIONS: TBD - FIELD VERIFY PRIOR TO PRODUCTION

FINISH/COLOR: White, see EXP-601.3B for fabric spec

Fabrication to be in accordance with IHG standards as stated in the FF&E Construction and Specification Guidelines and as follows:



Images Not to Scale or Color
For Design Intent Only

NOTES:

1. Clear anodized aluminum metal fascia to be provided by manufacturer.
2. Chain to be #10 Stainless steel with stops.
3. Manufacturer to add 6" of extra length to shades on top of roll.
4. ANSI Standards approved cord tension device to be used, install on side of window frame.
5. All drapery and blackout fabrics must meet flammability code NFPA 701 Small Scale. Certification of compliance must accompany invoice
6. All hardware to be commercial grade
7. No seams allowed either vertically or horizontally, full fabric panels required.
8. All substitutions to be submitted to InterContinental Hotels Group (IHG) Plan Review and Design team for written approval prior to manufacturing and purchasing.

ISSUE DATE:	REVISION DATE:	REV. NO:	SPEC NO:
9/2/2014	10/1/2016	1	EXP-602.3

Contact supplier for contracted pricing. All orders must be marked as specified by IHG. All installed fabrics, upholstery, carpet, wallcovering, and other finish materials must meet local fire codes and regulations. Manufacturer must provide flame certificate to owner/purchaser at time order is shipped. Fabricator and/or installer must confirm the exact quantities required. All substitutions must be approved by IHG prior to ordering. Manufacturers must provide maintenance instructions. All shop drawings, finish samples, artwork and/or strike-offs must be submitted to IHG, for approval prior to production.



Brand Design

Holiday Inn Express - Formula Blue Public Area Scheme

InterContinental Hotels Group
Design & Construction
Three Ravinia Drive, Suite 100
Atlanta, GA 30346  InterContinental Hotels Group

COLORWAY:

AREA: Public Areas

- 9. Designer to determine quantity based upon individual property requirements.
- 10. Drapery fabrication and hardware to be of contract quality and suitable for commercial use

FINISHES:



MANUFACTURER:

Warp & Phil by Fabri-Quilt
901 East 14th Avenue
North Kansas City, MO 64116
816-421-2000
quotes@warpandphil.com

REPRESENTATIVE:

Category: EXP-601.3B
Description: Window Shade Sheer Fabric
Color: White
Pattern: Fine Lines
Content: 100% Polyester (PVC-free)
Width: 94" W

ISSUE DATE:	REVISION DATE:	REV. NO:	SPEC NO:
9/2/2014	10/1/2016	1	EXP-602.3

Contact supplier for contracted pricing. All orders must be marked as specified by IHG. All installed fabrics, upholstery, carpet, wallcovering, and other finish materials must meet local fire codes and regulations. Manufacturer must provide flame certificate to owner/purchaser at time order is shipped. Fabricator and/or installer must confirm the exact quantities required. All substitutions must be approved by IHG prior to ordering. Manufacturers must provide maintenance instructions. All shop drawings, finish samples, artwork and/or strike-offs must be submitted to IHG, for approval prior to production.



Brand Design

Holiday Inn Express - Formula Blue Public Area Scheme

InterContinental Hotels Group
Design & Construction
Three Ravinia Drive, Suite 100
Atlanta, GA 30346  InterContinental Hotels Group

COLORWAY:

AREA:

MANUFACTURER:

WARP & PHIL BY FABRI-QUILT
P 816-421-2000

E quotes@warpanphil.com
901 East 14th Avenue
North Kansas City, MO 64116

REP FIRM:

SPEC NO: EXP-603.2
 DESCRIPTION: Sheer at Public Space
 MODEL NO: WTF-005c
 DIMENSIONS: Varies Per Property
 CONTENT: 100% Polyester
 FLAMABILITY: NFPA 701
 WIDTH/REPEAT: 118" Pattern to Run Horizontal

Fabrication to be in accordance with IHG standards as stated in the FF&E Construction and Specification Guidelines and as follows:



Images Not to Scale or Color
For Design Intent Only

NOTES:

1. Window treatment configuration must be submitted to IHG Plan Review department for review and approval, prior to ordering.
2. Sheer panels to be full-height and full width of the window. 1-way or 2 way draw depending on the property constraints.
3. Drapery fabrication and hardware to be of contract quality and suitable for commercial use.
4. All products must meet or exceed all applicable state and local codes including NFPA 701 Small and Large Scale. Certification of compliance must accompany invoice.

ISSUE DATE:	REVISION DATE:	REV. NO:	SPEC NO:
4/28/2017			EXP-603.2

Contact supplier for contracted pricing. All orders must be marked as specified by IHG. All installed fabrics, upholstery, carpet, wallcovering, and other finish materials must meet local fire codes and regulations. Manufacturer must provide flame certificate to owner/purchaser at time order is shipped. Fabricator and/or installer must confirm the exact quantities required. All substitutions must be approved by IHG prior to ordering. Manufacturers must provide maintenance instructions. All shop drawings, finish samples, artwork and/or strike-offs must be submitted to IHG, for approval prior to production.



Brand Design

Holiday Inn Express - Formula Blue Public Area Scheme

InterContinental Hotels Group
Design & Construction
Three Ravinia Drive, Suite 100
Atlanta, GA 30346  InterContinental Hotels Group

COLORWAY:

AREA:

-
5. Drapery sizes and quantities to be field verified at each property prior to order placement. Fabricator to verify all site conditions, dimensions, materials required for installation, and confirm fabric yardage.
 6. Window treatments that are two-way draw require overlap masters at leading edges, and sufficient return at sides to preclude light transfer/view.
 7. SHEER PANELS fully traversing (2-way draw preferred), seamless, 200% fullness, with continuous weighted strip at bottom hem. Finished length to be 1/2" above finished floor, or where applicable 1/2" above PTAC unit.
 8. HARDWARE: To be Kirsch Architrac or equal; overlap masters to be used on two-way draw drapery. Hardware color: White. Use ceiling-mount track unless otherwise instructed by IHG. Drapery pin hooks to be stainless steel and non corrosive.
 9. Heading: 4" double fold heading with buckram; French-pleats. Traversing panels to include non-corrosive, grommet for baton (front-placed).
 10. Hems: 4" double hem at bottom, and 1-1/2" double side hem.
 11. Weights: 1" covered lead weights tacked at hemline on each seam and each hem, except directly above PTAC units, continuous covered weight strip to be used across entire hem to prevent blowing. All metal parts must be corrosion proof.
 12. Buckram to be triple-dip and washable.
 13. Overlock seams with safety stitch and surged, turned, single needled to prevent light leakage. Thread must match fabric, no monofilament thread to be used. French seams must be used on any unlined drapery.
 14. All patterns to be matched both vertically and horizontally across entire drapery or sheer panel. Seams to be hidden within pleats.
 15. Batons: All traversing drapery to include front-mount white fiberglass or clear acrylic batons; to be attached into master lead carrier through non-corrosive eyelet and washer sewn into the front face of reinforced drapery or sheer heading. Bottom of baton to hang no higher than 54" A.F.F. at typical guestroom. Accessible guestrooms require ADA compliant batons; 48" minimum with loop ring that hangs 48" A.F.F., and within accessible reach.
 16. Drapery must be fan-folded for shipping.
 17. Sheer panels to be mounted at the ceiling or wall mounted pending the property.
 18. No products shall infringe on any third party patents, copyrights, trademarks or other intellectual property rights.
-

FINISHES:

ISSUE DATE:

4/28/2017

REVISION DATE:

REV. NO:

SPEC NO:

EXP-603.2

Contact supplier for contracted pricing. All orders must be marked as specified by IHG. All installed fabrics, upholstery, carpet, wallcovering, and other finish materials must meet local fire codes and regulations. Manufacturer must provide flame certificate to owner/purchaser at time order is shipped. Fabricator and/or installer must confirm the exact quantities required. All substitutions must be approved by IHG prior to ordering. Manufacturers must provide maintenance instructions. All shop drawings, finish samples, artwork and/or strike-offs must be submitted to IHG, for approval prior to production.