



Brand Design

Holiday Inn Express - Formula Blue
Guestroom Scheme

InterContinental Hotels Group
Design & Construction
Three Ravinia Drive, Suite 100
Atlanta, GA 30346  InterContinental Hotels Group

COLORWAY:

AREA: Guestroom

MANUFACTURER:

WARP & PHIL BY FABRI-QUILT
P 816-421-2000

E quotes@warpanphil.com
901 East 14th Avenue
North Kansas City, MO 64116

REP FIRM:

SPEC NO: EXG-601.3

DESCRIPTION: Full Fabricated Dual Window Shade System

MODEL NO: Dual Rollershade Clutch Operated With Blackout Side U Channels (2) and Sill Channel (1)

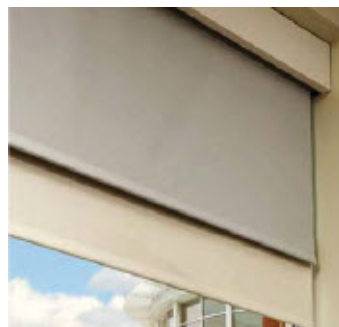
DIMENSIONS: Typical New Development Window opening is roughly 4'-4" tall by 8'-0" wide Typical Renovation Window Opening is roughly 4'6" – 5'5" tall by 5'-0" wide

FINISH / COLOR: Blackout channels: White See EXG-601.3A (Blackout) & EXG-601.3B (Sheer) for Fabric Specs

SIZE: Typical New Development Window opening is roughly 4'-4" tall by 8'-0" wide Typical Renovation Window Opening is roughly 4'6" – 5'5" tall by 5'-0" wide **FIELD VERIFY PRIOR TO PRODUCTION**

DETAIL: **IMPORTANT - SEE NOTE #1 BELOW PRIOR TO ORDERING PRODUCT**

Fabrication to be in accordance with IHG standards as stated in the FF&E Construction and Specification Guidelines and as follows:



Images Not to Scale or Color
For Design Intent Only

NOTES:

QUANTITY: TBD	UNIT COST: \$ TBD	TOTAL COST: \$ TBD
----------------------	--------------------------	---------------------------

ISSUE DATE: 9/25/2016	REVISION DATE:	REV. NO:	SPEC NO: EXG-601.3
---------------------------------	-----------------------	-----------------	------------------------------

All orders must be marked as specified by IHG. All installed fabrics, upholstery, carpet, wallcovering, and other finish materials must meet local fire codes and regulations. Manufacturer must provide flame certificate to owner/purchaser at time order is shipped. Fabricator and/or installer must confirm the exact quantities required. All substitutions must be approved by IHG prior to ordering. Manufacturers must provide maintenance instructions. All shop drawings, finish samples, artwork and/or strike-offs must be submitted to IHG, for approval prior to production.



Brand Design

Holiday Inn Express - Formula Blue
Guestroom Scheme

InterContinental Hotels Group
Design & Construction
Three Ravinia Drive, Suite 100
Atlanta, GA 30346  InterContinental Hotels Group

COLORWAY:

AREA: Guestroom

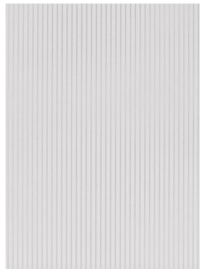


MANUFACTURER:
Warp & Phil by Fabri-Quilt
901 East 14th Avenue
North Kansas City, MO 64116
816-421-2000
quotes@warpandphil.com

REPRESENTATIVE:

Category: Fabric
Description: Roller Shade Blackout
(EXG-601.3A)
Color: Tusk
Pattern: Ottawa
Content: 100% Polyester
Width: 108" W goods

Backing: 0% openness (blackout)
Flame Rtg: NFPA 701



MANUFACTURER:
Warp & Phil by Fabri-Quilt
901 East 14th Avenue
North Kansas City, MO 64116
816-421-2000
quotes@warpandphil.com

REPRESENTATIVE:

Category: Fabric
Description: Roller Shade Sheer (EXG-
601.3B)
Color: White
Pattern: Fine Lines
Content: 100% Polyester (PVC-free)
Width: 94" W

Backing: 30%

QUANTITY: TBD UNIT COST: \$ TBD TOTAL COST: \$ TBD

ISSUE DATE: 9/25/2016 REVISION DATE: REV. NO: SPEC NO: EXG-601.3

All orders must be marked as specified by IHG. All installed fabrics, upholstery, carpet, wallcovering, and other finish materials must meet local fire codes and regulations. Manufacturer must provide flame certificate to owner/purchaser at time order is shipped. Fabricator and/or installer must confirm the exact quantities required. All substitutions must be approved by IHG prior to ordering. Manufacturers must provide maintenance instructions. All shop drawings, finish samples, artwork and/or strike-offs must be submitted to IHG, for approval prior to production.

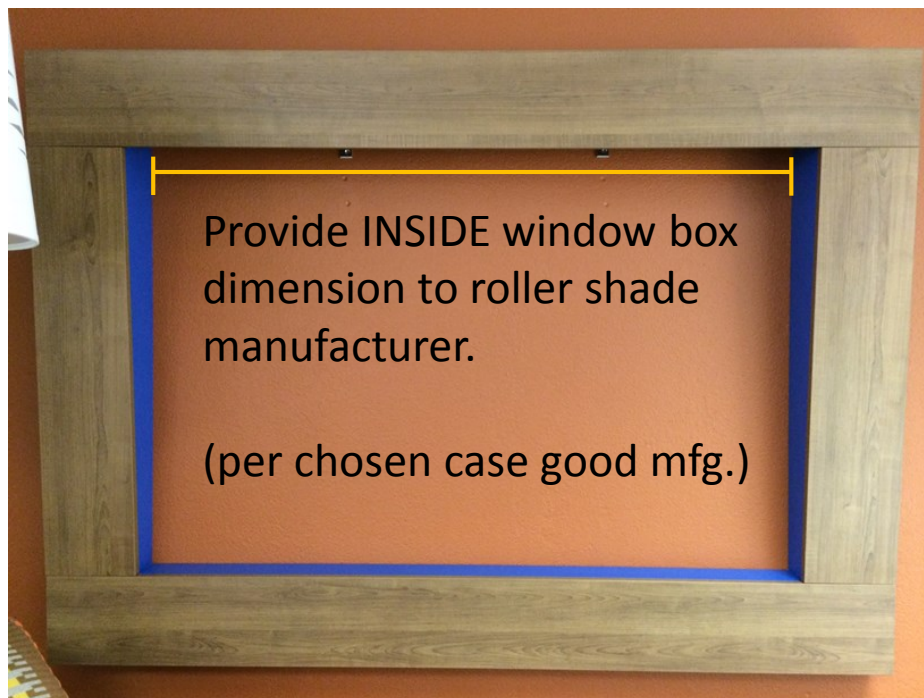
Guide for Placing Window Box and Roller Shade Orders:

Step 1: Measure window frame;
Provide window measurements to desired case good manufacturer for proper sizing and construction of window box.

Step 2: Upon receipt of final window box drawings from desired case good manufacturer, provide inside dimensions of window box to roller shade manufacturer for proper sizing of roller shades (see diagram below).

NOTE: The roller shades are mounted WITHIN the window box, not the architectural window frame. Also, window box fabrication varies from manufacturer to manufacturer so specific measurements from desired manufacturer must be provided for proper fitting.

Step 3: Confirm manufacturer of window box to roller shade manufacturer.



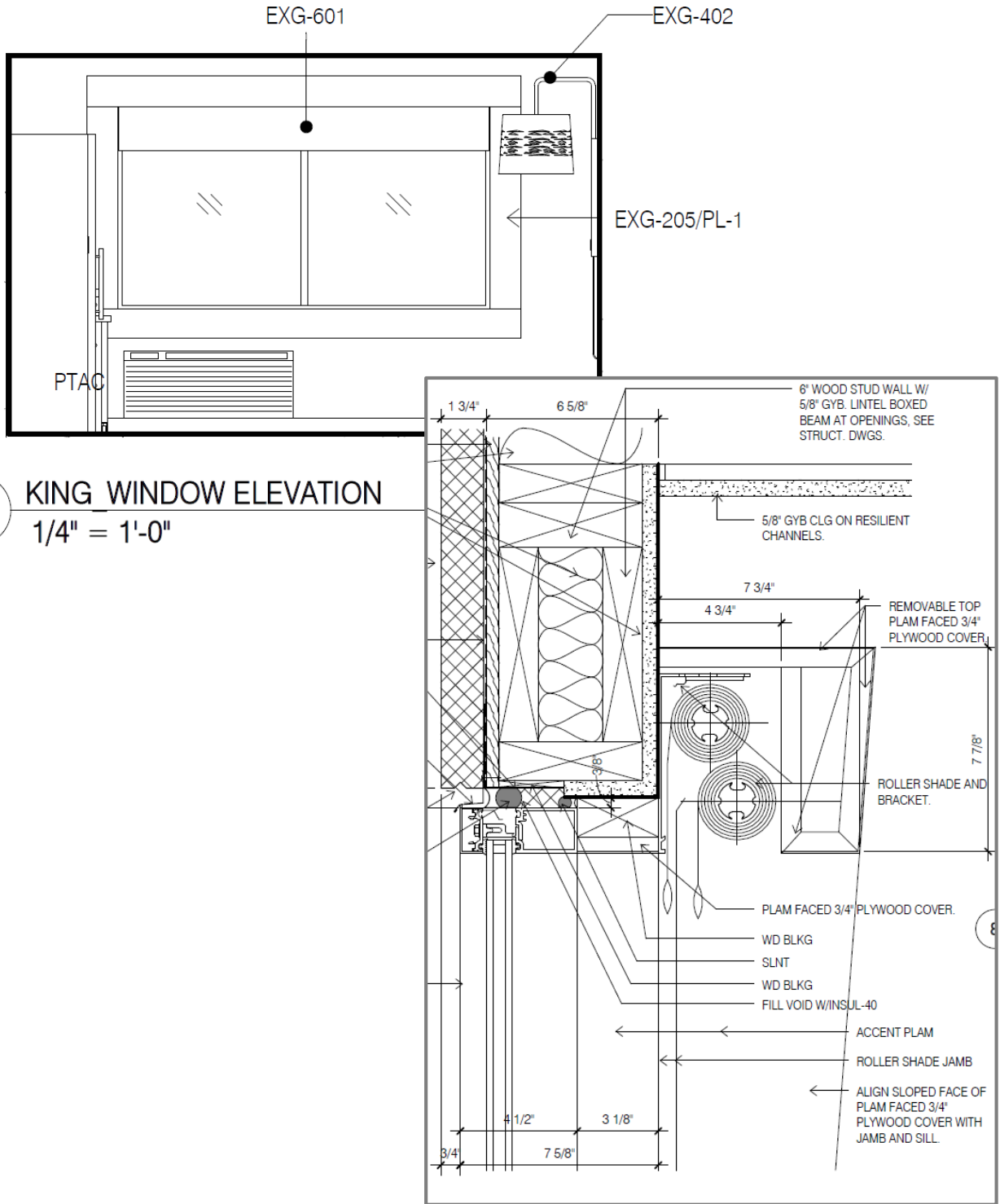
ISSUE DATE:

REVISION DATE:

REV. NO:

SPEC NO:

EXG-601 & EXG-603



ISSUE DATE:

REVISION DATE:

REV. NO:

SPEC NO:
 EXG-601